

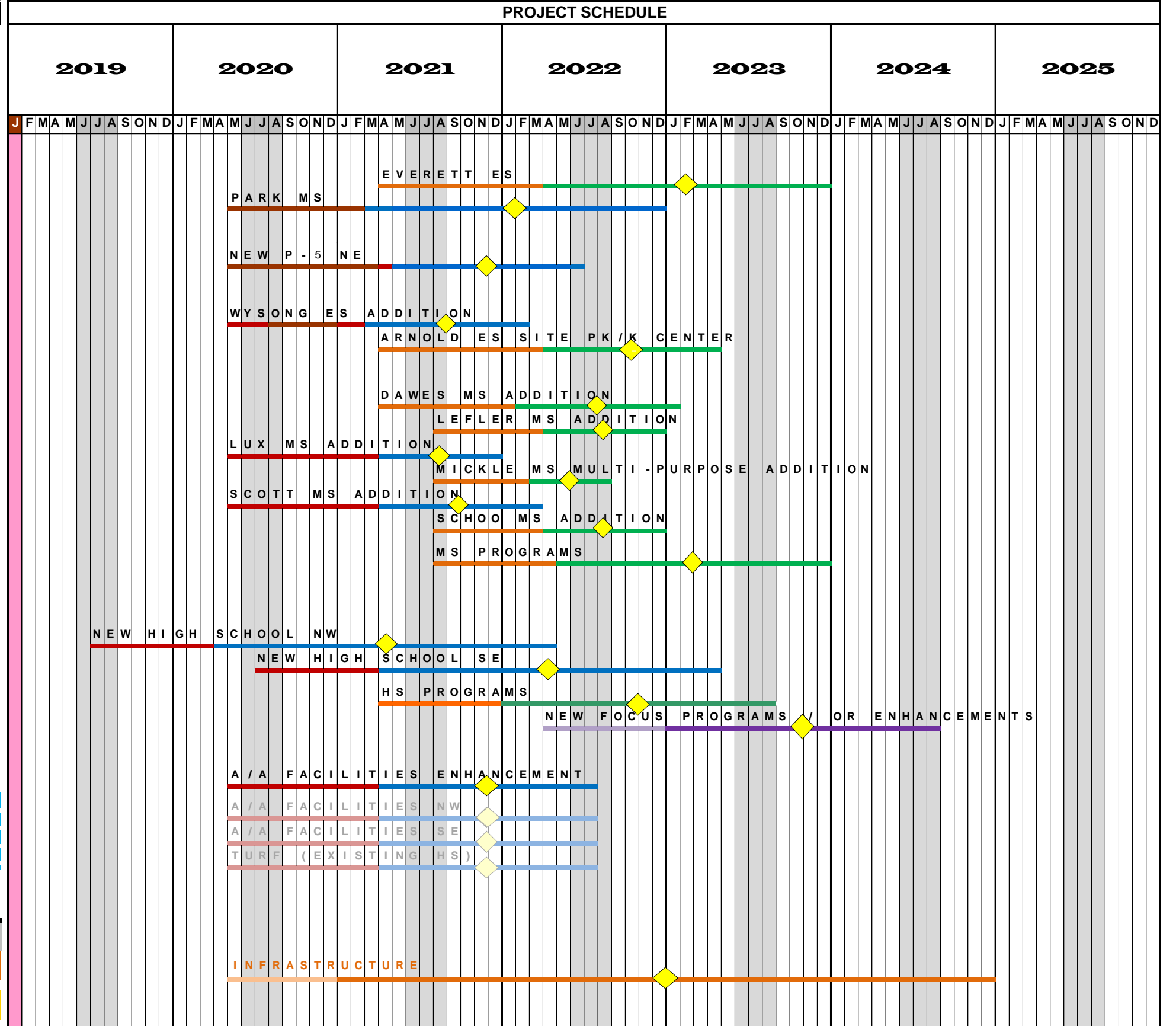
LINCOLN PUBLIC SCHOOLS TEN (10) YEAR FACILITIES & INFRASTRUCTURE PLAN - "FACILITIES"

Rev. 12/10/2019

Approved By the Lincoln Board of Education on 12/10/2019

NOTES

School	PROJECT SCOPE				Project Cost Estimates	TIME LINE by MONTHS				PROJECT COST MID-POINT Construction Costs (based on 3% Annual)
	History / Info		Project Types			Bd Issue Proj. Implementation	Proj. Dev.	Constr. (Mid-Point)		
	Last Completed IAQ Date	25 Year Life cycle	IAQ	ADD. REN. NEW TECH.						
Indoor Air Quality Projects (IAQ)										
Everett ES (IAQ)	1992	2017	X		\$13,652,929	0	27	12	21 (10.5)	\$15,349,913
Park MS (IAQ)	1993	2018	X		\$29,635,046	0	16	10	22 (11.0)	\$32,388,349
NEW PK-5 Elementary Schools										
NE (Waterford Site - 4-Section, 80,500 s.f.)	TBD	N/A		X	\$21,633,250	0	16	12	14 (7.0)	\$23,534,488
Elementary School Additions										
Wysong ES Addition	TBD	N/A	X		\$4,999,389	0	16	10	12 (6.0)	\$5,401,100
Arnold ES Site PK/K Center	TBD	N/A		X	\$10,077,505	0	27	12	13 (6.5)	\$11,228,864
Middle School Additions										
Dawes MS (Gym & Multi-Purpose Room Addition)	TBD	N/A	X	X	\$2,837,541	0	27	10	12 (6.0)	\$3,143,919
Lefler MS (Multi-Purpose Addition)	TBD	N/A	X	X	\$472,113	0	31	8	9 (4.5)	\$523,681
Lux MS (Gym Addition)	TBD	N/A	X		\$1,463,961	0	19	11	9 (4.5)	\$1,590,783
Mickle MS (Multi-Purpose Expansion/Addition)	TBD	N/A	X	X	\$798,051	0	31	7	6 (3.0)	\$880,211
Scott MS (Classroom & Gym Addition)	TBD	N/A	X	X	\$3,620,125	0	16	11	12 (6.0)	\$3,920,099
Schoo MS (Gym Addition)	TBD	N/A	X		\$1,283,211	0	31	8	9 (4.5)	\$1,423,374
Existing MS Program Enhancements (Art, FCS, CTE, Science & CLC's)										
	TBD	N/A		X	\$4,489,224	0	31	9	20 (10.0)	\$5,052,846
NEW High Schools										
High School NW w/ Focus Program (230,000 s.f.)	TBD	N/A		X	\$62,132,500	0	6	9	25 (12.5)	\$66,422,904
High School SE w/ Focus Program (230,000 s.f.)	TBD	N/A		X	\$62,132,500	0	18	9	25 (12.5)	\$68,295,081
Existing HS Programs (Art, FCS, ITE & Science)										
	TBD	N/A		X	\$6,244,390	0	27	9	20 (10.0)	\$6,965,655
New Focus Programs and/or Enhancements										
	TBD	N/A		X	\$2,000,000	0	39	9	20 (10.0)	\$2,291,276
Athletic/Activities Facilities Enhancements										
Athletic / Activities Facilities (Enhancements)	TBD	N/A		X	\$12,000,000	0	16	11	16 (8.0)	\$13,054,620
Acquire New School Sites / Development Costs										
NW Site (at New HS Site - OPTION)	TBD	N/A		X	\$9,417,160	0	16	11	16 (8.0)	\$10,244,787
SE Site (at New HS Site - OPTION)	TBD	N/A		X	\$5,575,190	0	16	11	16 (8.0)	\$6,065,166
HS Turf Projects (Existing High School Sites - OPTION)	TBD	N/A		X	\$7,700,000	0	16	11	16 (8.0)	\$8,376,715
Acquire New School Sites / Development Costs	TBD	N/A			\$10,000,000	0	0	0	0 0	\$10,000,000
SUB-TOTAL:					\$249,471,734					\$271,467,164
INFRASTRUCTURE (Tier 1) @ 5.735%					\$14,307,204	16	8	48 (16)		\$16,031,623
Tier TOTALs:					\$263,778,938					\$287,498,787



"The Board of Education adopts the LINCOLN PUBLIC SCHOOLS TEN YEAR FACILITIES AND INFRASTRUCTURE PLAN as its guideline, subject to annual review and change as circumstances and conditions may demand."