

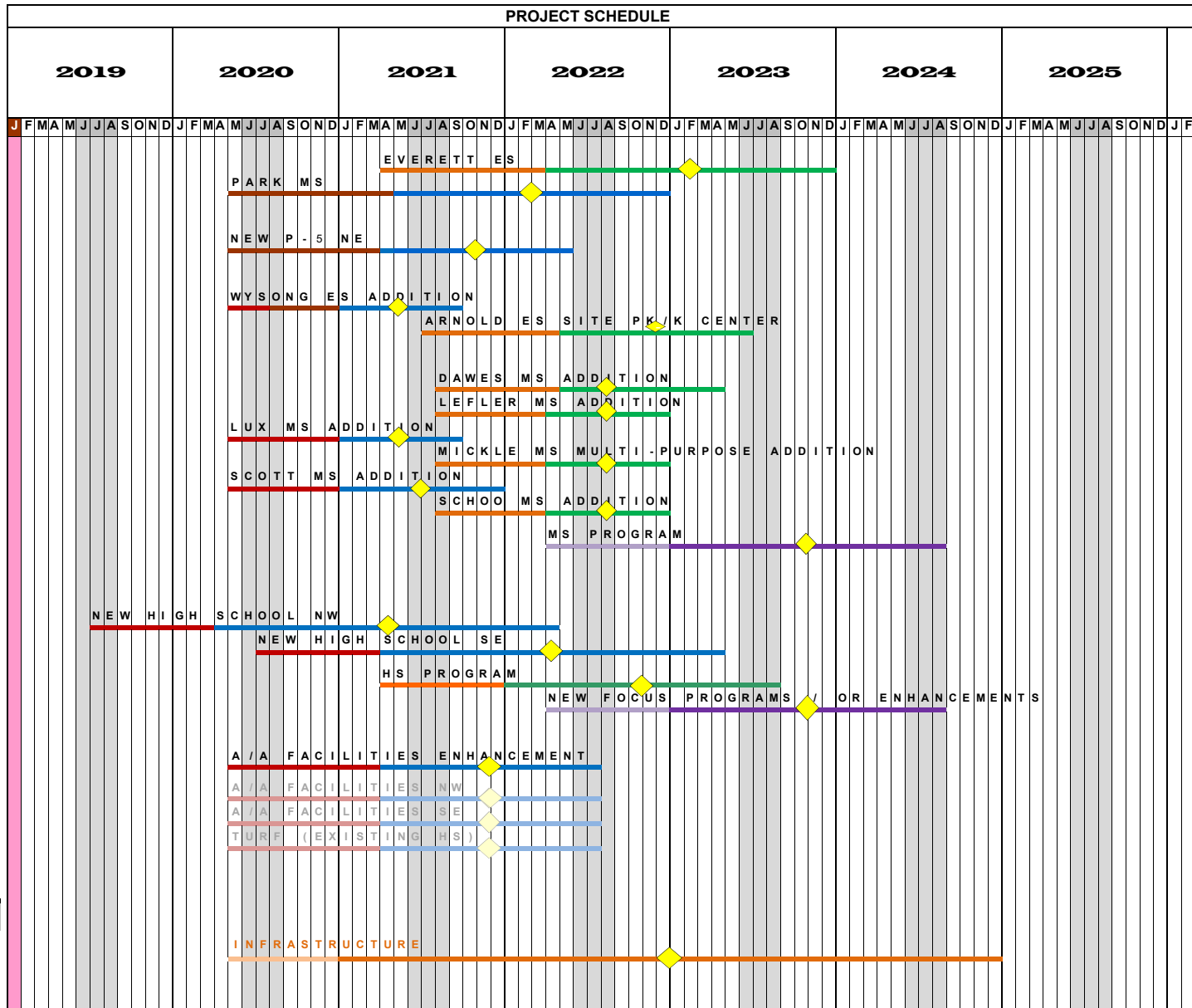
# LINCOLN PUBLIC SCHOOLS TEN (10) YEAR FACILITIES & INFRASTRUCTURE PLAN - "Facilities"

ReV. 11/8/2019

**DRAFT 11/12/2019**

NOTES

School	PROJECT SCOPE						TIME LINE by MONTHS				PROJECT COST	
	History / Info		Project Types				Project Cost Estimates	Bd Issue Proj. Implementation	Proj. Dev.	Constr. (Mid-Point)	MID-POINT Construction Costs (based on 3% Annual)	
	Last Completed IAQ Date	25 Year Life-cycle	IAQ	ADD.	REN.	NEW						TECH.
Everett ES (IAQ)	1992	2017	X				0	27	12	21 (10.5)	\$15,349,913.49	
Park MS (IAQ)	1993	2018	X				0	16	12	20 (10.0)	\$32,462,762.27	
<b>NEW P-5 Elementary Schools</b>												
NE (Waterford Site - 4-Section, 80,500 s.f.)	TBD	N/A				X	0	16	11	14 (7.0)	\$23,480,167.09	
<b>Elementary Schools Additions</b>												
Wysong ES Addition	TBD	N/A		X			0	16	8	9 (4.5)	\$5,357,162.56	
Arnold ES Site PK/K Center	TBD	N/A				X	0	30	10	14 (7)	\$11,266,821.38	
<b>Middle Schools</b>												
Dawes MS (Gym & Multi-Purpose Room Addition)	TBD	N/A		X	X		0	31	9	12 (6)	\$3,165,294.29	
Lefler MS (Multi-Purpose Addition)	TBD	N/A		X	X		0	31	8	9 (4.5)	\$523,680.64	
Lux MS (Gym Addition)	TBD	N/A		X			0	19	8	9 (4.5)	\$1,579,755.46	
Mickle MS (Multi-Purpose Expansion/Addition)	TBD	N/A		X	X		0	31	8	9 (4.5)	\$885,220.84	
Scott MS (Classroom & Gym Addition)	TBD	N/A		X			0	16	8	12 (6)	\$3,892,829.02	
Schoo MS (Gym Addition)	TBD	N/A		X			0	31	8	9 (4.5)	\$1,423,373.80	
Existing MS Program Enhancements (Art, FCS, CTE, Science & CLC's)	TBD	N/A			X		0	39	9	20 (10)	\$5,143,025.60	
<b>NEW High Schools</b>												
High School NW w/ Focus Program (230,000 s.f.)	TBD	N/A				X	0	6	9	25 (12.5)	\$66,422,904.46	
High School SE w/ Focus Program (230,000 s.f.)	TBD	N/A				X	0	18	9	25 (12.5)	\$68,295,080.95	
Existing HS Programs (Art, FCS, ITE & Science)	TBD	N/A			X		0	27	9	20 (10)	\$6,965,654.51	
New Focus Programs and/or Enhancements	TBD	N/A			X		0	39	9	20 (10)	\$2,291,276.00	
<b>Athletic/Activities Facilities Enhancements</b>												
Athletic / Activities Facilities (Enhancement)	TBD	N/A			X		0	16	11	16 (8.0)	\$13,054,620.00	
NW Site (at New HS Site - OPTION)	TBD	N/A				X	0	16	11	16 (8.0)	\$9,417,160	
SE Site (at New HS Site - OPTION)	TBD	N/A				X	0	16	11	16 (8.0)	\$5,575,190	
Turf (at Existing High School Sites - OPTION)	TBD	N/A				X	0	16	11	16 (8.0)	\$8,376,714.50	
Acquire New School Sites / Development Costs	TBD	N/A					0	0	0	0 0	\$10,000,000.00	
<b>SUB-TOTAL:</b>							\$249,471,734				\$271,559,542	
<b>INFRASTRUCTURE (Tier 1) @ 5.8%</b>							\$14,469,360.56	16	8	48 (16)		\$16,213,323.65
<b>Tier TOTALS:</b>							\$263,941,094					\$287,772,866



**INFRASTRUCTURE (Tier 1) \$16,213,323.65**

- ROOF RECAP / ROOF REPLACEMENT
- INTERIOR LIGHTING
- BLEACHERS
- FAMILY RESTROOMS
- PARKING LOT PAVING
- PLAYGROUND EQUIPMENT AND SURFACING
- TRAFFIC-FLOW (Safety)