

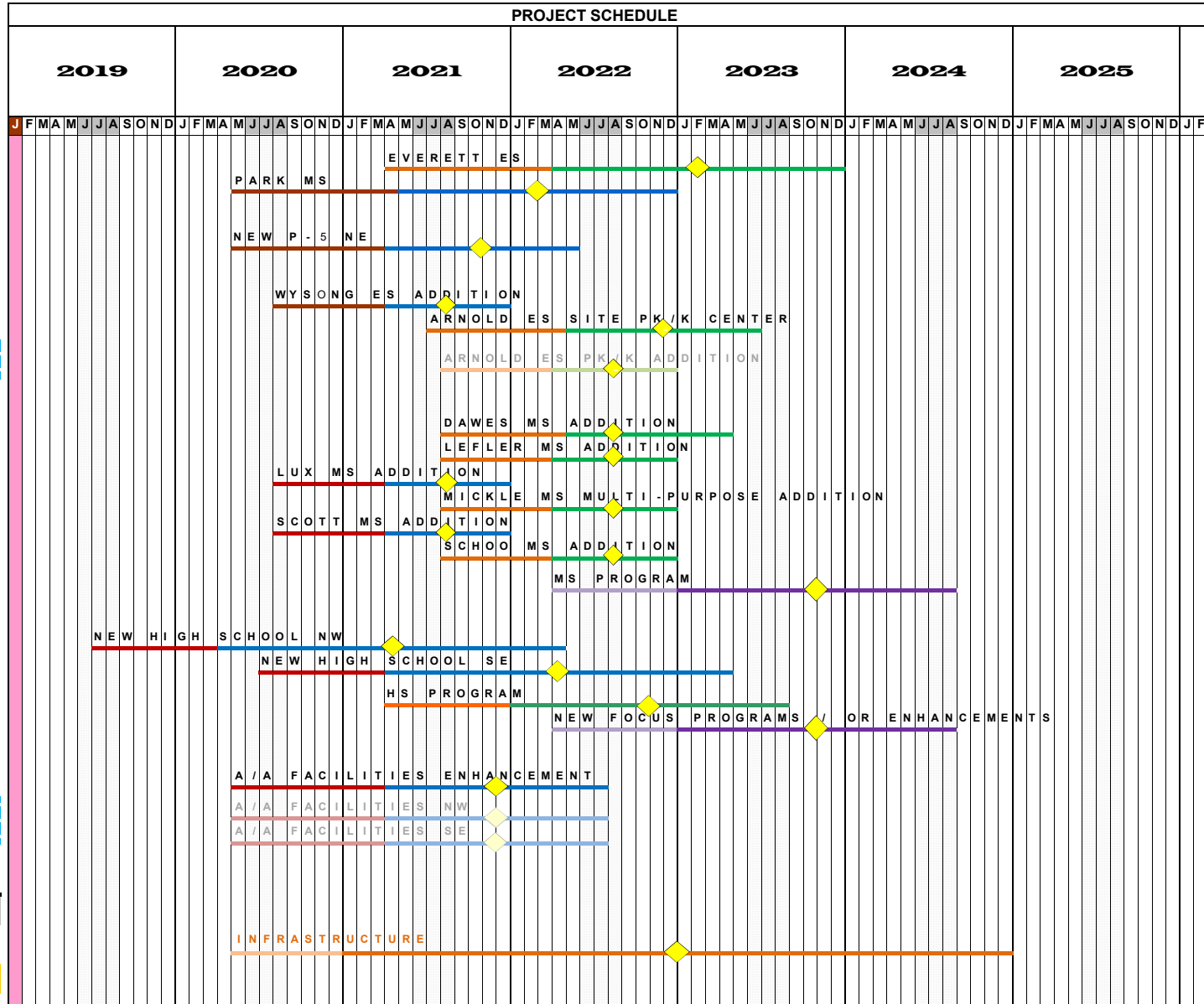
# LINCOLN PUBLIC SCHOOLS TEN (10) YEAR FACILITIES & INFRASTRUCTURE PLAN - "Facilities"

ReV. 10/21/2019

**DRAFT 10/22/2019**

NOTES

School	PROJECT SCOPE						TIME LINE by MONTHS				PROJECT COST
	History / Info		Project Types				Project Cost Estimates	Bd Issue Proj. Implementation	Proj. Dev.	Constr. (Mid-Point)	MID-POINT Construction Costs (based on 3% Annual)
	Last Completed IAQ Date	25 Year Life cycle	IAQ	ADD.	REN.	NEW					
Everett ES (IAQ)	1992	2017	X				0	27	12	21 (10.5)	\$15,349,913.49
Park MS (IAQ)	1993	2018	X				0	16	12	20 (10.0)	\$32,462,762.27
<b>NEW P-5 Elementary Schools</b>											
NE (Waterford Site - 4-Section, 80,500 s.f.)	TBD	N/A			X		0	16	11	14 (7.0)	\$23,480,167.09
<b>Elementary Schools Additions</b>											
Wysong ES Addition	TBD	N/A		X			0	19	8	9 (4.5)	\$5,394,822.96
Arnold ES Site PK/K Center (Stand Alone Fac.-OPTION)	TBD	N/A			X		0	30	10	14 (7)	\$11,400,144.71
Arnold ES PK/K Addition	TBD	N/A	X				0	31	8	9 (4.5)	\$10,045,311.95
<b>Middle Schools</b>											
Dawes MS (Gym & Multi-Purpose Room Addition)	TBD	N/A		X	X		0	31	9	12 (6)	\$3,165,294.29
Lefler MS (Multi-Purpose Addition)	TBD	N/A		X	X		0	31	8	9 (4.5)	\$523,680.64
Lux MS (Gym Addition)	TBD	N/A		X			0	19	8	9 (4.5)	\$1,579,755.46
Mickle MS (Multi-Purpose Expansion/Addition)	TBD	N/A		X	X		0	31	8	9 (4.5)	\$885,220.84
Scott MS (Classroom & Gym Addition)	TBD	N/A		X			0	19	8	9 (4.5)	\$3,906,464.22
Schoo MS (Gym Addition)	TBD	N/A		X			0	31	8	9 (4.5)	\$1,423,373.80
Existing MS Programs (Art, FCS, ITE & Science)	TBD	N/A			X		0	39	9	20 (10)	\$4,836,567.44
<b>NEW High Schools</b>											
High School NW w/ Focus Program (230,000 s.f.)	TBD	N/A				X	0	6	9	25 (12.5)	\$66,422,904.46
High School SE w/ Focus Program (230,000 s.f.)	TBD	N/A				X	0	18	9	25 (12.5)	\$68,295,080.95
Existing HS Programs (Art, FCS, ITE & Science)	TBD	N/A			X		0	27	9	20 (10)	\$6,965,654.51
New Focus Programs and/or Enhancements	TBD	N/A			X		0	39	9	20 (10)	\$2,291,276.00
<b>Athletic/Activities Facilities Enhancements</b>											
Athletic / Activities Facilities (Enhancement)	TBD	N/A			X		0	16	11	16 (8.0)	\$13,054,620.00
NW Site (at New HS Site - OPTION)	TBD	N/A				X	0	16	11	16 (8.0)	\$10,244,787.11
SE Site (at New HS Site - OPTION)	TBD	N/A				X	0	16	11	16 (8.0)	\$6,065,165.57
Acquire New School Sites / Development Costs	TBD	N/A					0	0	0	0 0	\$10,000,000.00
<b>SUB-TOTAL:</b>						\$249,323,484					\$271,437,703
<b>INFRASTRUCTURE (Tier 1) @ 6.25%</b>						\$15,582,717.73	16	8	48 (16)		\$17,460,871.53
<b>Tier TOTALs:</b>						\$264,906,201					\$288,898,575



<b>INFRASTRUCTURE (Tier 1)</b>	<b>\$17,460,871.53</b>
--------------------------------	------------------------

- ROOF RECAP / ROOF REPLACEMENT
- INTERIOR LIGHTING
- BLEACHERS
- FAMILY RESTROOMS
- PARKING LOT PAVING
- PLAYGROUND EQUIPMENT AND SURFACING
- TRAFFIC-FLOW (Safety)